

# CN445R2(CE)

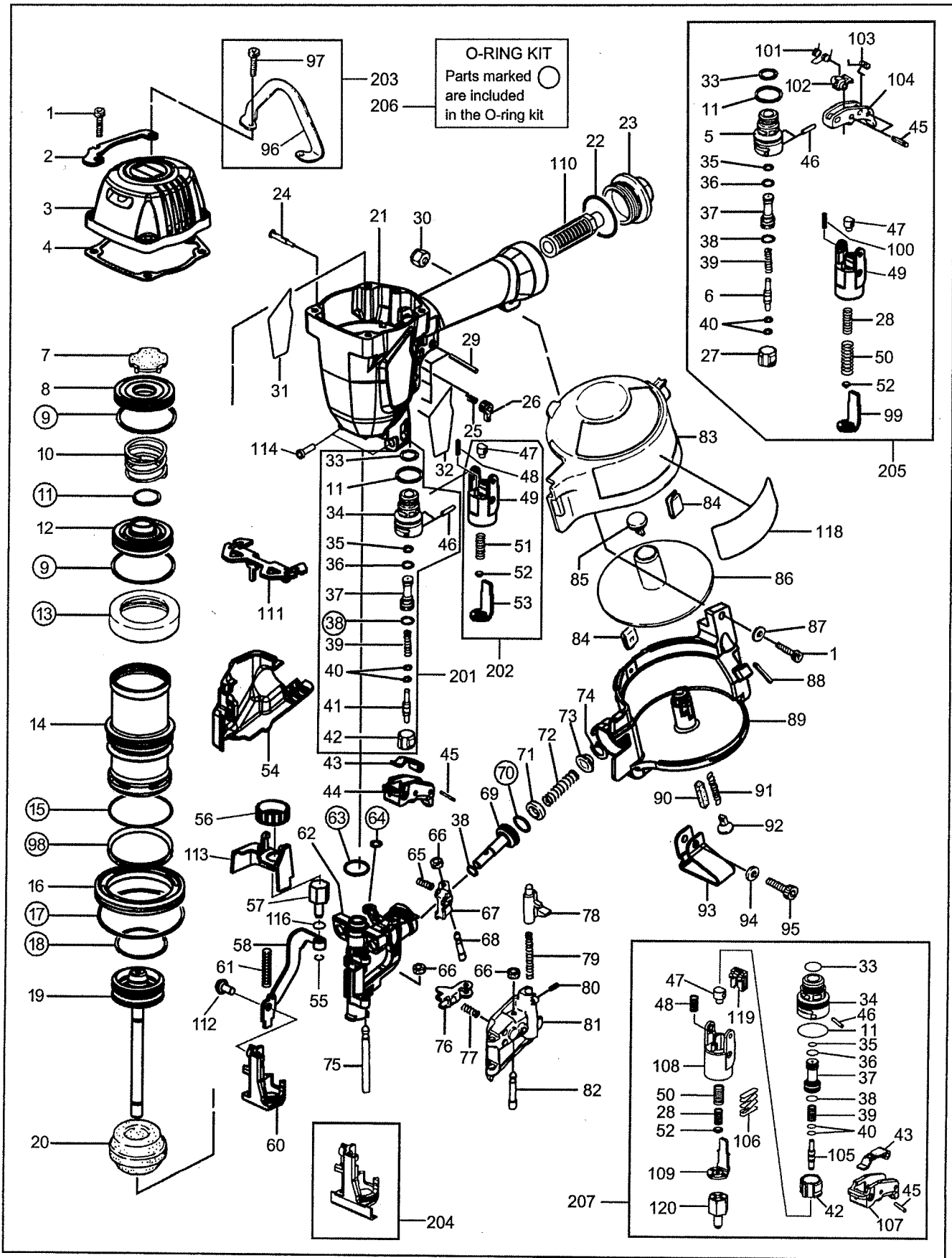
EXPLODED  
VIEW AND SPARE  
PARTS LIST

EINZELTEILDAR-  
STELLUNG UND  
ERSATZEILLISTE

SCHEMA ECLATE ET  
LISTE DES PIECES  
DE RECHANGE

ESPLOSO DEI  
COMPONENTI DE  
ELENCO DELLE  
PARTI DI RICAMBIO

DESPIECE DE LA  
MAQUINA Y LISTA  
DE RECAMBIOS



No.	Code	Description
1	CN38008	SCREW M6X25
2	CN37853	PROTECTOR A
3	CN37191	CYLINDER CAP
4	CN37855	CYLINDER CAP SEAL
5	CN31323	TRIGGER VALVE HOUSING
6	CN33723	TRIGGER VALVE STEM
7	CN37993	EXHAUST LABEL
8	CN37216	HEAD VALVE GUIDE
9	CN38003	O-RING 1AP48
10	CN38020	COMPRESSION SPRING 8020
11	KN12644	O-RING 1AP20
12	CN37217	HEAD VALVE PISTON
13	CN37824	CYLINDER SEAL
14	CN38031	CYLINDER
15	CN38004	O-RING 1AG50
16	CN37193	CYLINDER RING
17	CN38005	O-RING 1AG75
18	CN38006	O-RING P41
19	CN70459	MAIN PISTON UNIT
20	CN34714	BUMPER
21	CN81237	FRAME
22	HH12118	O RING 1AG35
23	CN37865	END CAP
24	KN12622	TRIGGER LOCK LEVER
25	KK23507	SPRING 3507
26	KN12621	TRIGGER LOCK DIAL
27	CN31346	TRIGGER VALVE CAP
28	KK23735	COMPRESSION SPRING 3735
29	CN38014	ROLL PIN 3X32
30	CC49408	NUT 6
31	CN37220	LABEL B CN445R
32	CN37212	LABEL A CN445R
33	KN12643	O-RING 1AP12
34	KN12636	TRIGGER VALVE HOUSING
35	KN12642	O-RING 1AP6
36	KN12646	O-RING 1BP7
37	CN37997	PILOT VALVE
38	KN12641	O-RING 1AP9
39	CN38021	COMPRESSION SPRING 8021
40	KN12647	O-RING 1B 1.4X2.5
41	CN38030	TRIGGER VALVE STEM
42	KN12637	TRIGGER VALVE CAP
43	CN35115	CONTACT LEVER

No.	Code	Description
44	CN35714	TRIGGER
45	FF22402	SPRING PIN 3X16 (LIGHT LOAD)
46	KN12660	STRAIGHT PIN 2660
47	CN38027	ARM GUIDE PIN
48	KK23129	COMPRESSION SPRING 3129
49	CN37842	CONTACT ARM GUIDE A
50	KK23736	COMPRESSION SPRING 3736
51	KK23653	COMP. SPRING 3653
52	CN35004	CONTACT BUMPER
53	CN37845	CONTACT ARM A
54	CN37210	ARM COVER
55	CN38011	E-RETAINING RING 3.2
56	CN37836	ADJUST DIAL
57	CN35006	CONTACT BOLT
58	CN70456	CONTACT ARM "B"
60	CN70450	CONTACT FOOT UNIT
61	KK23150	SPRING 3150
62	CN70458	NOSE UNIT
63	CN38001	O-RING 1AP14
64	CN38002	O-RING 1AP5
65	CN38019	COMPRESSION SPRING 8019
66	GN12062	RUBBER WASHER 2.7X7X2.5
67	CN37986	FEED PAWL
68	CN38024	STEP PIN 8024
69	CN38022	FEED PISTON
70	CN38000	O-RING 1A P18
71	CN37998	FEED PISTON STOP
72	CN38016	COMPRESSION SPRING 8016
73	CN37995	SPRING COLLAR
74	CN38012	C-RETAINING RING 24
75	CN38023	STRAIGHT PIN 8023
76	CN37994	CHECK PAWL
77	CN38017	TORSION SPRING 8017
78	CN37988	DOOR LATCH
79	CN38018	COMPRESSION SPRING 8018
80	CN38013	SPRING PIN 3X8
81	CN37987	DOOR
82	CN38025	STEP PIN 8025
83	CN37863	MAGAZINE CAP
84	CN31458	MAGAZINE WEAR CLIP
85	CN37428	POST CAP
86	CN37823	NAIL SUPPORT
87	EE31104	PLAIN WASHER 1-6

88	FF22203	W.S. PIN 4X40(FORMER FF21222)
89	CN37862	MAGAZINE
90	CN30601	SPACER CN65091
91	CN38015	TENSION SPRING 8015
92	CN37383	SPRING HOOK
93	CN37829	SHINGLE GAUGE
94	EE11101	SPRING WASHER 2-6
95	CN38007	SCREW M6X22
96	CN37206	FRAME HANGER
97	BB40422	BOLT 6X30 FOR CC00402
98	CN37991	CHECK VALVE
99	CN35140	CONTACT ARM A
100	KK23282	COM. SPRING 3282
101	KK33247	SPRING 3247
102	TA16138	S.T. LEVER
103	KK33144	TORSION SPRING 3144
104	CN35714	TRIGGER
105	CN35128	TRIGGER VALVE STEM
106	CN34500	SPRING, LEVER
107	CN35001	TRIGGER
108	CN35002	ARM GUIDE
109	CN35003	CONTACT ARM A
110	TA17024	FILTER A
111	CN37208	CN37853 REPLACED PROTECTOR B
112	CN38010	SCREW M6X12
113	CN37211	ADJUST SPACER
114	CN38009	SCREW M8X30
116	CN37992	O-RING A1.2X4
118	4009571	CAUTION LABEL
119	CN35656	LEVER
120	CN37204	CONTACT BOLT
201	CN81250	TRIGGER VALVE KIT
202	CN81251	ARM GUIDE KIT
203	CN81156	FRAME HANGER ASSY (CN445R)
204	CN70433	VINYL SAIDING KIT
205	CN81252	S.T. KIT
206	CN81253	O-RING KIT ASSY
207	CN81254	ANTI-DOUBLE FIRE TRIGGER KIT