

# CN890B PNEUMATIC NAILER

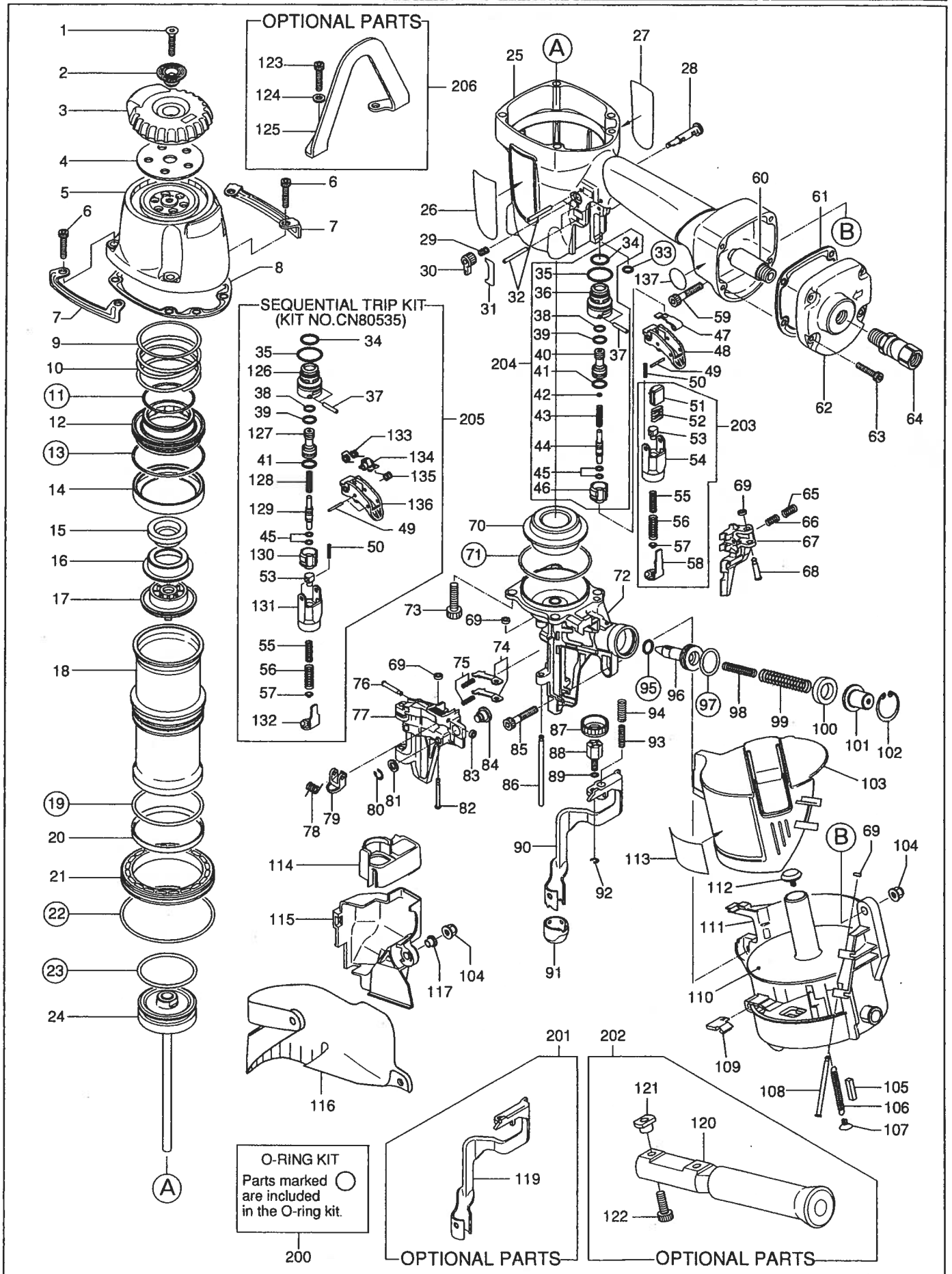
EXPLODED  
NEW AND SPARE  
PARTS LIST

EINZELTEILDAR-  
STELLUNG UND  
ERSATZEILLISTE

SCHEMA ECLATE ET  
LISTE DES PIÈCES  
DE RECHANGE

ESPLOSO DEI  
COMPONENTI DE  
ELENCO DELLE  
PARTI DI RICAMBIO

DESPIECE DE LA  
MAQUINA Y LISTA  
DE RECAMBIOS



| CN890B |         |   |     |         |   |
|--------|---------|---|-----|---------|---|
| No     | Code    | Description                             | No  | Code    | Description                               |
| 1      | AA82411 | Screw M6 x 20                           | 80  | JJ10405 | E-Ring 4                                  |
| 2      | KN11393 | Exhaust Cover Holder                    | 81  | EE39814 | Plain Washer B                            |
| 3      | CN35294 | Exhaust Cover                           | 82  | FF41258 | Pin 1258                                  |
| 4      | KN11392 | Filter B                                | 83  | EE39609 | Rubber Washer 1.8x6x2                     |
| 5      | KN70016 | Cylinder Cap Unit                       | 84  | FF41837 | Step Pin 1837                             |
| 6      | BB40208 | Screw M6 x 28                           | 85  | BB40487 | Screw M6x35                               |
| 7      | CN35906 | Protector                               | 86  | FF31520 | Straight Pin 1520                         |
| 8      | CN35298 | Cylinder Cap Seal                       | 87  | CN35007 | Adjust Dial                               |
| 9      | CN35323 | Plain Washer                            | 88  | CN35337 | Contact Arm "C"                           |
| 10     | KK23713 | Compression Spring 3713                 | 89  | HH11903 | O-Ring 1A1,2x4                            |
| 11     | HH14906 | O-Ring AS568-133                        | 90  | CN70047 | Contact Arm B Unit                        |
| 12     | KN11391 | Head valve piston                       | 91  | CN35904 | Contact Top                               |
| 13     | HH19161 | O-Ring 1 A 3.1 X 66.4                   | 92  | JJ10404 | E-Ring 3.2                                |
| 14     | CN35307 | Head Valve Seal                         | 93  | KK23792 | Compression Spring 3792 used with KK23793 |
| 15     | KN11394 | Plain Washer B                          | 94  | KK23793 | Compr. Spring 3793                        |
| 16     | CN35334 | Plain Washer                            | 95  | HH11132 | O-Ring 1AP10A                             |
| 17     | CN35302 | Piston Stop                             | 96  | CN35314 | Feed Piston                               |
| 18     | CN35921 | Cylinder                                | 97  | HH11143 | O-Ring 1AP21                              |
| 19     | HH12108 | O-Ring 1AG65                            | 98  | KK23737 | Compression Spring 3737                   |
| 20     | CN35325 | Check Valve                             | 99  | KK23225 | Compression Spring 3225                   |
| 21     | CN35922 | Cylinder Ring                           | 100 | CN31570 | Feed Piston Stop                          |
| 22     | HH12117 | O Ring 1AG85                            | 101 | CN31571 | Spring Collar                             |
| 23     | HH19218 | O-Ring 4.5X48.7                         | 102 | JJ22407 | Retaining Ring C26                        |
| 24     | CN70101 | Main Piston Unit                        | 103 | CN35651 | Magazine Cover                            |
| 25     | CN35841 | Frame for CN-890B (ers. CN35841)        | 104 | CC00402 | Elastic Stop Nut M6x1                     |
| 26     | CN35853 | Name Plate CN-890B                      | 105 | CN30601 | Spacer                                    |
| 27     | CN35636 | Warning Label (Frame)                   | 106 | KK13144 | Tension Spring 3144                       |
| 28     | CN35075 | Trigger Lock Lever                      | 107 | CN30602 | Receiver, Spring                          |
| 29     | KK23507 | Compression Spring 3507                 | 108 | FF41287 | Step Pin 1287                             |
| 30     | CN35074 | Tigg.Lock Dial/repCN35058               | 109 | CN35340 | Magazine Wear Clip                        |
| 31     | CN35681 | Label B                                 | 110 | CN35318 | Nail Support                              |
| 32     | FF21611 | Roll Pin 3 x 32 AW                      | 111 | CN35317 | Magazine                                  |
| 33     | HH11105 | O-Ring AP7                              | 112 | CN31963 | Post Cap                                  |
| 34     | HH11125 | O-Ring 1AP12                            | 113 | CN35905 | Warning Label                             |
| 35     | HH11138 | O-Ring 1AP20                            | 114 | CN35899 | Spacer CN890S (repl. CN35309)             |
| 36     | CN33909 | Trigger Valve Housing                   | 115 | CN35632 | Cover                                     |
| 37     | FF30161 | Straight Pin 161                        | 116 | CN35915 | Dust Cover                                |
| 38     | HH11119 | O-Ring 1AP6                             | 117 | CN30707 | Collar                                    |
| 39     | HH11209 | O-Ring 1BP7                             | 119 | CN70124 | Contact Arm B flat                        |
| 40     | CN35655 | Pilot Valve                             | 120 | CN35643 | Grip                                      |
| 41     | HH11113 | O-Ring 1AP9                             | 121 | CN35641 | Special Nut                               |
| 42     | CN31436 | Pilot Orifice                           | 122 | BB40411 | Screw M6x20                               |
| 43     | KK23814 | Comp. Spring 3814                       | 123 | BB40211 | Bolt 6 x 35                               |
| 44     | CN35128 | Trigger Valve Stem                      | 124 | EE33111 | Plain Washer 6                            |
| 45     | HH11901 | O-Ring 1B1.4x2.5                        | 125 | CN35642 | Hanger                                    |
| 46     | CN33910 | Trigger Valve Cap                       | 126 | CN31323 | Trigger Valve Hausing (seq.trip)          |
| 47     | CN35115 | Contact Lever                           | 127 | CN33627 | Pilot Valve (seq.trip)                    |
| 48     | CN35001 | Trigger                                 | 128 | KK24123 | Compression Spring 4123 (seq. trip)       |
| 49     | FF22402 | Spring Pin 3x16                         | 129 | CN33723 | Trigger Valve Stem (seq. trip)            |
| 50     | KK24123 | Compression Spring 4123 (repl. KK23129) | 130 | CN31346 | Trigger Valve Cap (seq. trip)             |
| 51     | CN35656 | Lever                                   | 131 | CN35139 | Contact Arm Guide A (seq. trip)           |
| 52     | CN34500 | Spring Lever                            | 132 | CN35140 | Contact Arm A (seq. trip)                 |
| 53     | CN35059 | Contact Arm Guide B                     | 133 | KK33247 | Torsion Spring 3247 (seq. trip)           |
| 54     | CN35002 | Contact Arm Guide                       | 134 | TA16138 | S.T. Lever (seq. trip)                    |
| 55     | KK23735 | Compression Spring 3735                 | 135 | KK33144 | Torsion Spring 3144 (seq. trip)           |
| 56     | KK23736 | Compression Spring 3736                 | 136 | CN35648 | Trigger (seq. trip)                       |
| 57     | CN35004 | Contact Bumper                          | 137 | CN35720 | Label B                                   |
| 58     | CN35003 | Contact Arm A                           | 200 | CN80607 | O-Ring Set                                |
| 59     | BB40208 | Screw M6 x 28                           | 202 | CN80525 | Grip set                                  |
| 60     | CN35685 | End cap filter                          | 203 | CN81013 | Arm Guide Kit                             |
| 61     | CN35331 | End Cap Seal                            | 204 | CN80546 | Trigger Valve Kit                         |
| 62     | CN35686 | End Cap                                 | 205 | CN80535 | Seq. Trip Kit                             |
| 63     | BB40210 | Screw M5x20                             | 206 | CN80532 | Hanger Kit                                |
| 64     | TT05426 | Swivel Joint                            |     |         |   |
| 65     | KK23710 | Compression Spring 3710                 |     |         |   |
| 66     | KK23788 | Compression Spring 3710                 |     |         |   |
| 67     | CN35896 | Feed Pawl                               |     |         |   |
| 68     | FF42216 | Step Pin 2216                           |     |         |   |
| 69     | EE39602 | Rubber Washer7                          |     |         |   |
| 70     | CN35327 | Bumper                                  |     |         |   |
| 71     | HH14729 | O-Ring AS568-144                        |     |         |   |
| 72     | CN35895 | Nose                                    |     |         |   |
| 73     | BB40221 | Screw M8 x 25                           |     |         |   |
| 74     | CN35898 | Check Pawl                              |     |         |   |
| 75     | KK23802 | Comp. Spring                            |     |         |   |
| 76     | FF41599 | Step Pin 1599                           |     |         |   |
| 77     | CN35897 | Door                                    |     |         |   |
| 78     | KK33261 | Torsion Spring 3261                     |     |         |   |
| 79     | CN33679 | Door Latch                              |     |         |   |

CN890 B